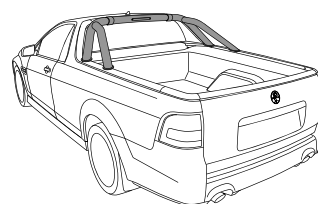


SPORTS BAR INSTALLATION INSTRUCTIONS

GMH VE Ute 2007

Part Number: SBAR0014



Care Instructions:



Clean Sports Bar with a mild detergent and water solution.



Do not use abrasive cleaners or solvents.

Place these instructions in vehicle's glove box after installation is complete

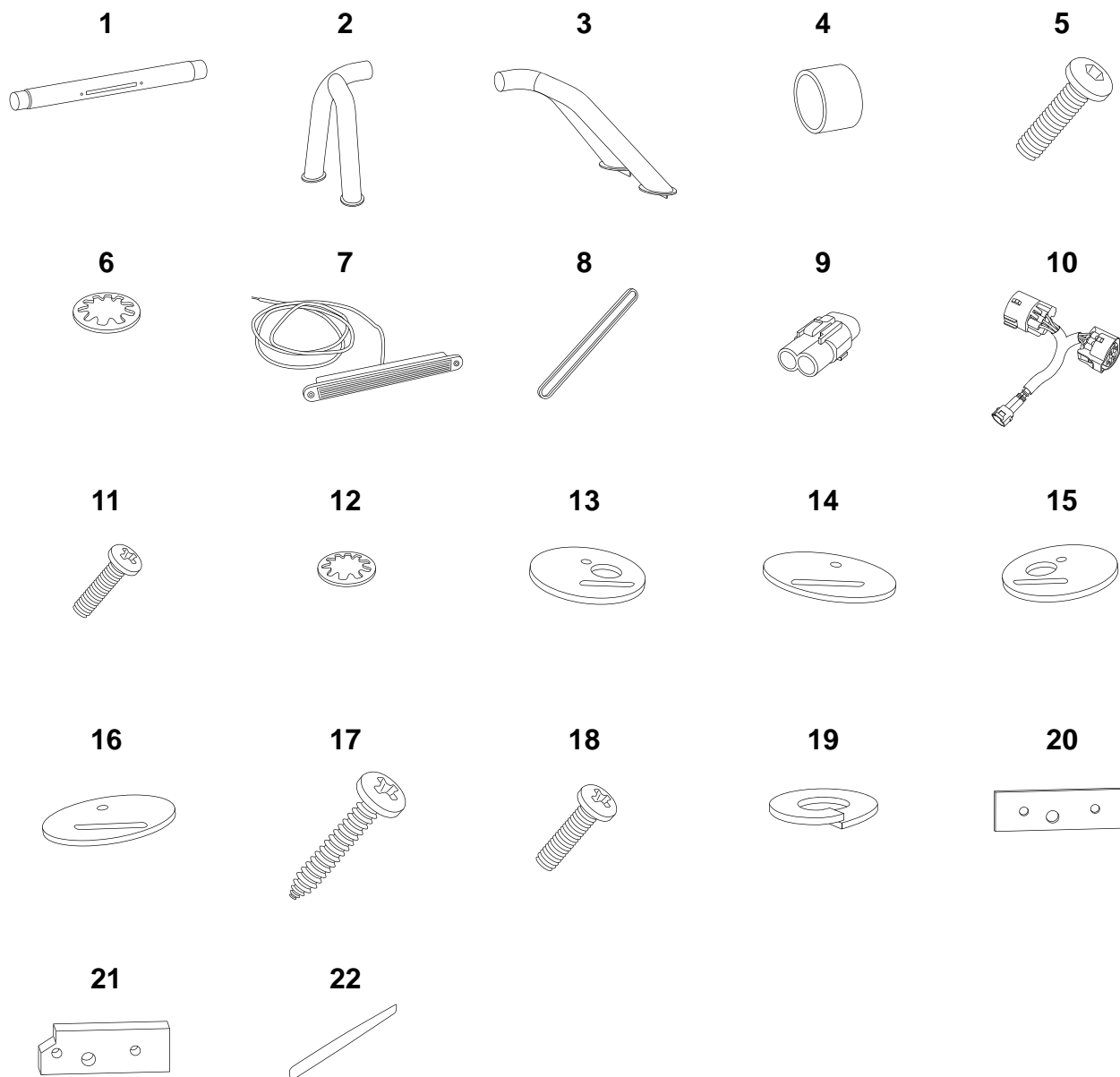
LIST OF PARTS

Item	Component Name	Qty
1	Sports Bar Top Tube	1
2	Sports Bar Left Hand Leg	1
3	Sports Bar Right Hand Leg	1
4	Rubber Sleeves	2
5	M8x30mm Black Screws Hex Drive	2
6	M8 Black Internal Tooth Washers	2
7	LED	1
8	LED Gasket (attached to LED)	1
9	Wiring Connector - Male	1
10	Wiring Adapter Loom	1
11	M4x30mm Screws	2
12	M4 Internal Tooth Washers	2

Item	Component Name	Qty
13	Foot Gasket Left Hand Front	1
14	Foot Gasket Left Hand Rear	1
15	Foot Gasket Right Hand Front	1
16	Foot Gasket Right Hand Rear	1
17	12Gx1½" Self Tapping Screws	4
18	M6x20mm Screws	8
19	M6 Spring Washers	12
20	Washer Plates	4
21	Clamping Plates with Tapped Holes	4
22	Black Decal	1

RECOMMENDED TOOL LIST

Allen Key Screwdriver bits to suit M8	Phillips Head Screwdriver	Torque Wrench (¼" Drive)
Torx Head Screwdriver Bits	Flat Head Screwdriver	Drill with 3/16" drill bit



IMPORTANT: To obtain correct installation, we recommend that you follow these step by step instructions carefully.

Please take care when assembling and installing this product to protect the finish and your investment. To protect your investment, wax this product after installing. Regular waxing is recommended. Do not use any type of polish or wax that contains abrasives that could damage the finish.

Finish Protection: Our products have a high finish that must be maintained such as any other high finish product on the vehicle. Protect the finish with a non-abrasive automotive wax. The use of soap, polish, or wax that contains abrasives is detrimental, as the compounds scratch the finish and open it to corrosion.

Disclaimer: The buyer assumes all risk and liability whatsoever from the installation and use of our products. Our products are sold as decorative accessories and should not be relied upon as protection for the vehicle or occupants in the event of a collision or rollover. The manufacturer assumes no liability for injury, loss, incidental or consequential damages in the event of a collision or rollover.

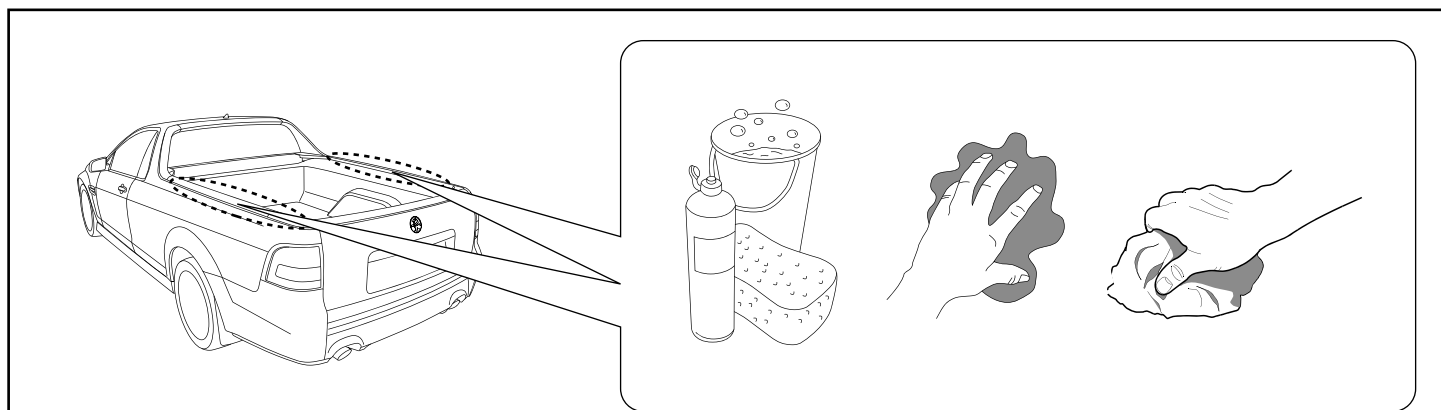


Diagram #1

1. **NOTE:** Two people are required to complete installation. Thoroughly clean and dry the installations areas. **See Dia #1.**

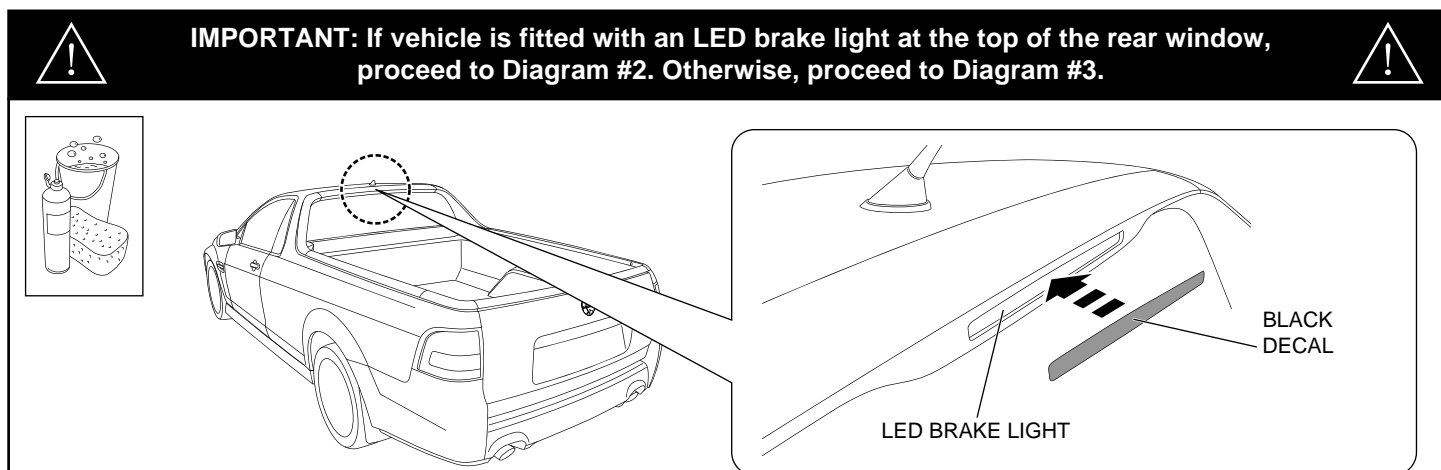


Diagram #2

2. Clean the LED brake light area with soap and water and dry with a clean cloth. After removing the protective lining, attach the black decal to the LED Brake light as shown, ensuring the brake light is completely covered. **See Dia #2.**

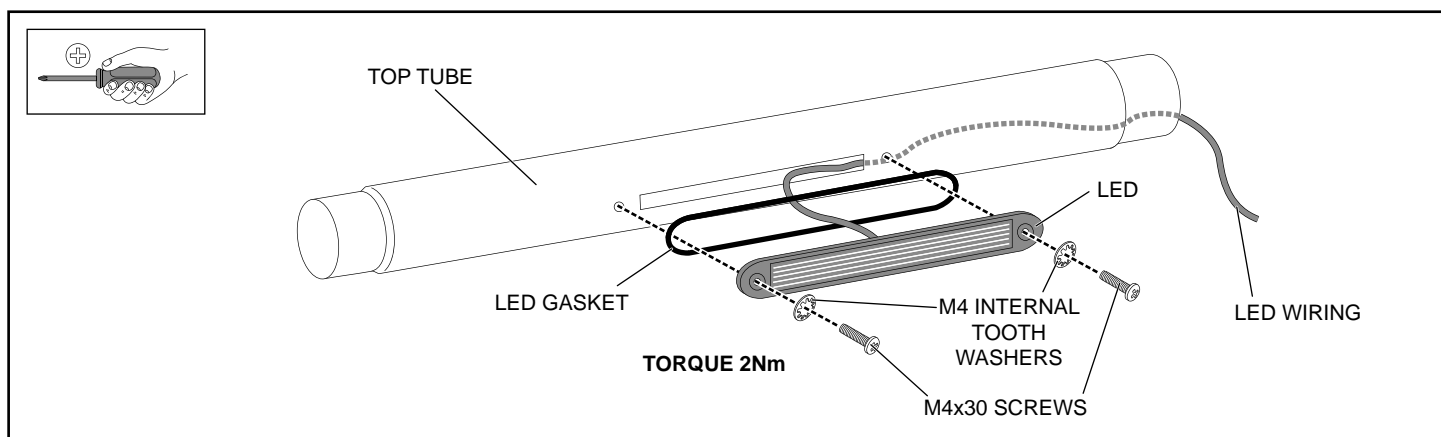


Diagram #3

3. Attach the LED and the LED gasket to the Sports Bar top tube using the M4x30mm screws and M4 internal tooth washers as shown. Tighten to torque 2Nm. Ensure the wiring connected to the LED is fed through the Sports Bar top tube and out the end as shown. **See Dia #3. NOTE:** Ensure the warning label is orientated correctly. If wording is upside-down flip bar 180°, but ensure LED wiring loom comes out the right hand end of the Sports Bar top tube.

GMH VE UTE 2007 SPORTS BAR

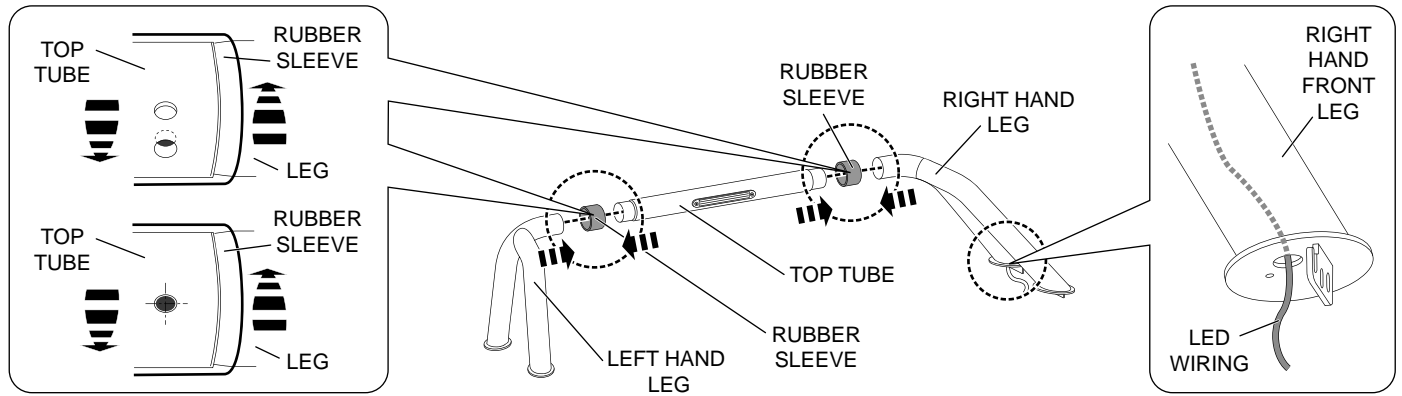


Diagram #4

4. Slide the rubber sleeves over the ends of the Sports Bar left hand leg and right hand leg and then slide the Sports Bar top tube in as shown. Ensure that all holes are aligned with each other, and that the LED wiring is fed through the large hole in the bottom of the Sports Bar right hand front leg. **See Dia #4. NOTE: Ensure the warning label is orientated correctly. If wording is upside-down flip bar 180°.**

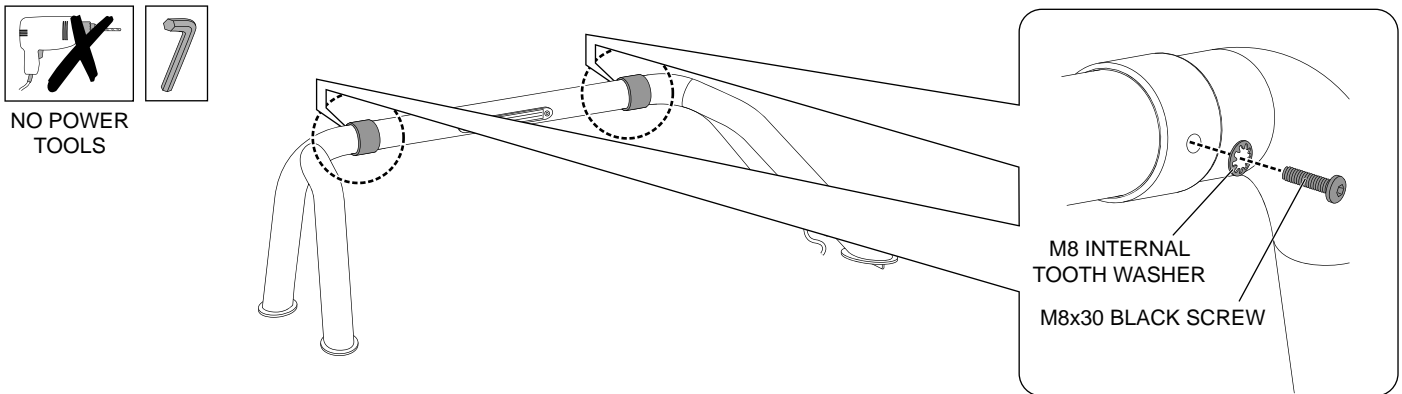


Diagram #5

5. Loosely attach the Sports Bar top tube to the Sports Bar left hand and right hand leg using the M8x30mm black screw and M8 black internal tooth washer as shown. Do not tighten yet. **See Dia #5.**

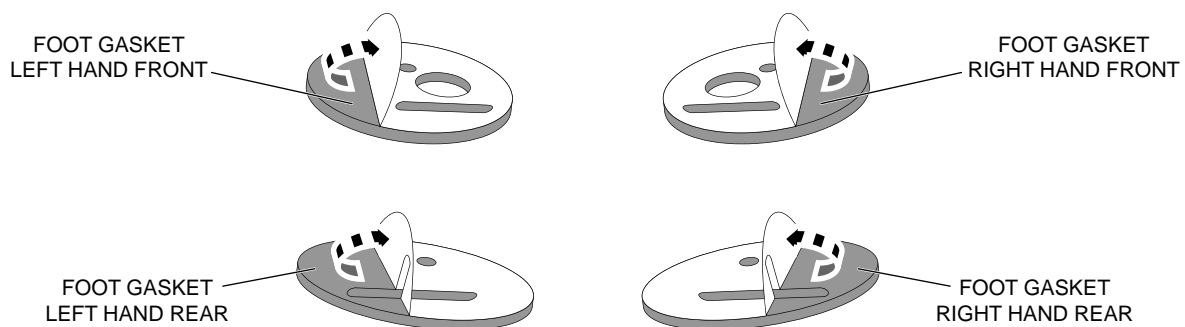


Diagram #6

6. Note the protective lining on back of Sports Bar foot gaskets. Trial fit the gaskets to the Sports Bar to determine which foot they are fitted to. Remove the lining before attaching in next step. **See Dia #6.**

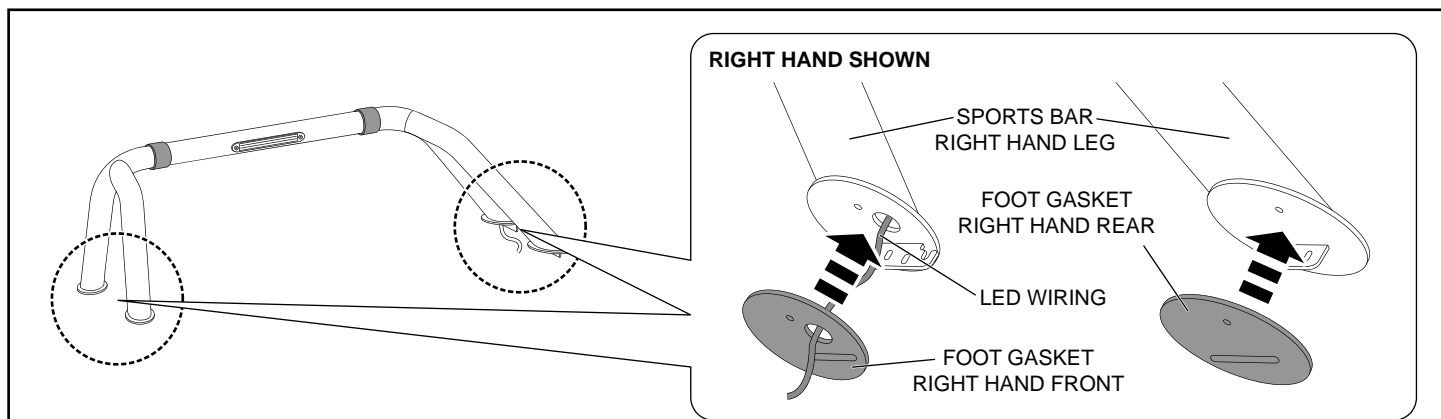


Diagram #7

7. Attach the foot gaskets to their correct Sports Bar foot as shown, ensuring the holes in the Sports Bar feet remain accessible. Repeat process for the other side of the vehicle. **See Dia #7.**

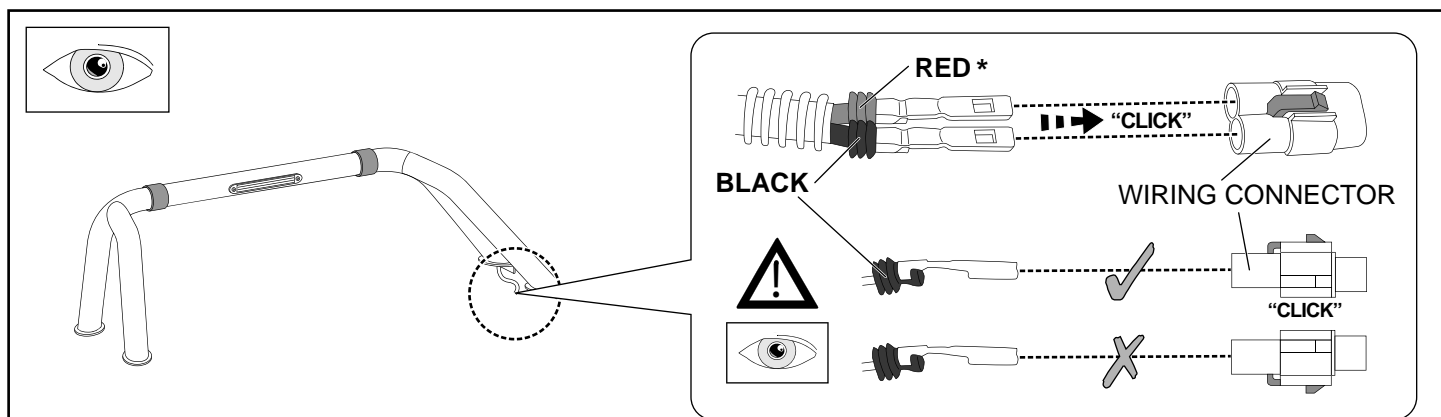


Diagram #8

8. Attach the male wiring connector to the end of the LED wiring loom as shown. Ensure the male wiring connector is orientated correctly when attaching. **See Dia #8.**

*** IMPORTANT: CHECK THE WIRING ADAPTER LOOM AND THE CORRECT LOCATION OF THE RED BRAKE SIGNAL WIRE TO ENSURE THEY MATCH WHEN THE WIRES ARE INSERTED INTO THE MALE CONNECTOR. IF THE WIRES DO NOT MATCH, THE SPORTS BAR LED WILL NOT FUNCTION.**

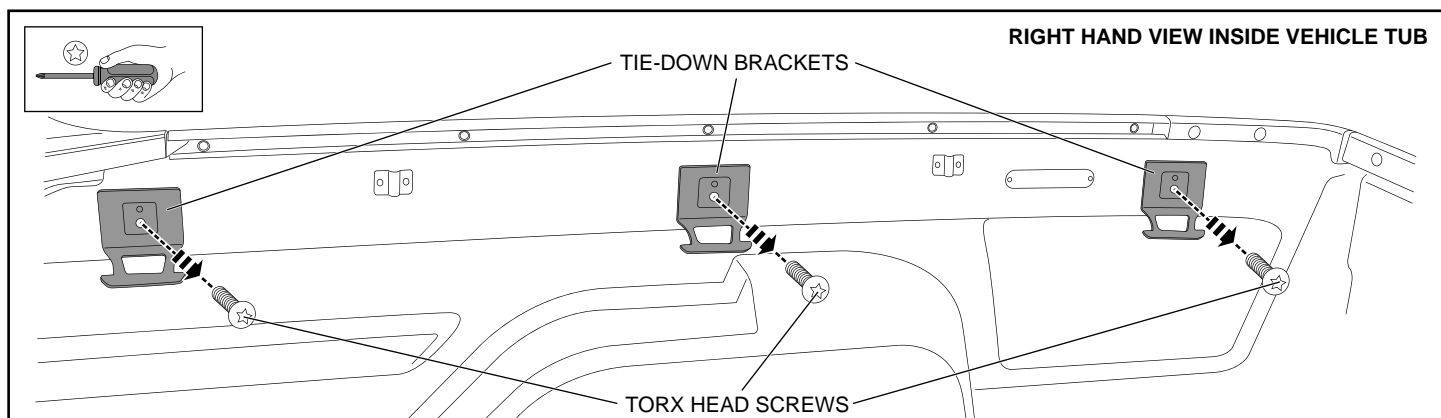


Diagram #9

9. Remove the three (3) tie-down brackets on the right hand of the bed using a torx-head screwdriver as shown. **See Dia #9.**

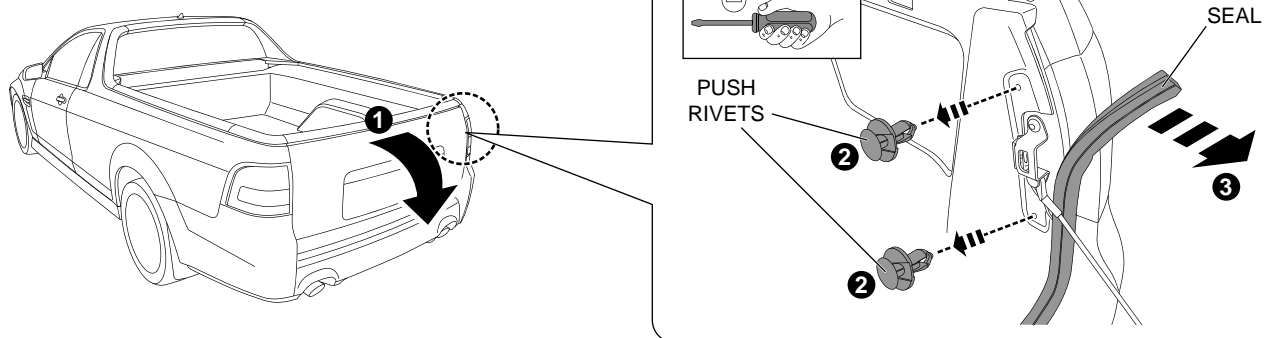


Diagram #10

10. Open the vehicle's tailgate. Remove the two (2) push rivets and peel back the rubber tailgate seal as far as the base of the tailgate as shown. **See Dia #10.**

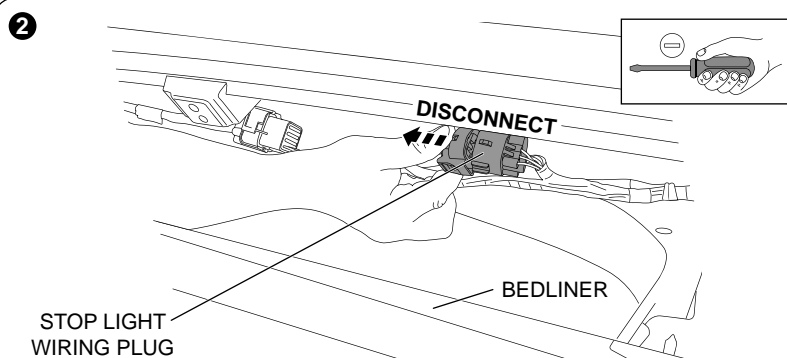
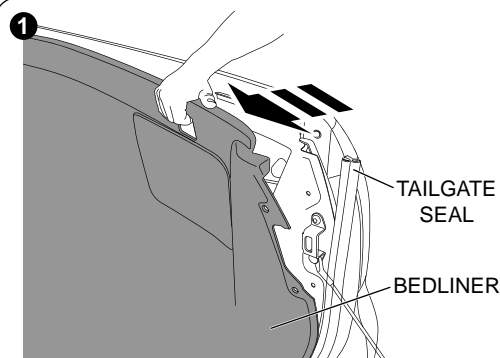


Diagram #11

11. Lift and pull the bedliner as shown to gain access to the wiring located in the side panel of the vehicle. Disconnect the stop light wiring plug located behind the bedliner, by pushing down on the tag on the connector using you finger or a flat blade screwdriver. **See Dia #11. NOTE: This connector is located above the wheel arch towards the rear of the vehicle.**

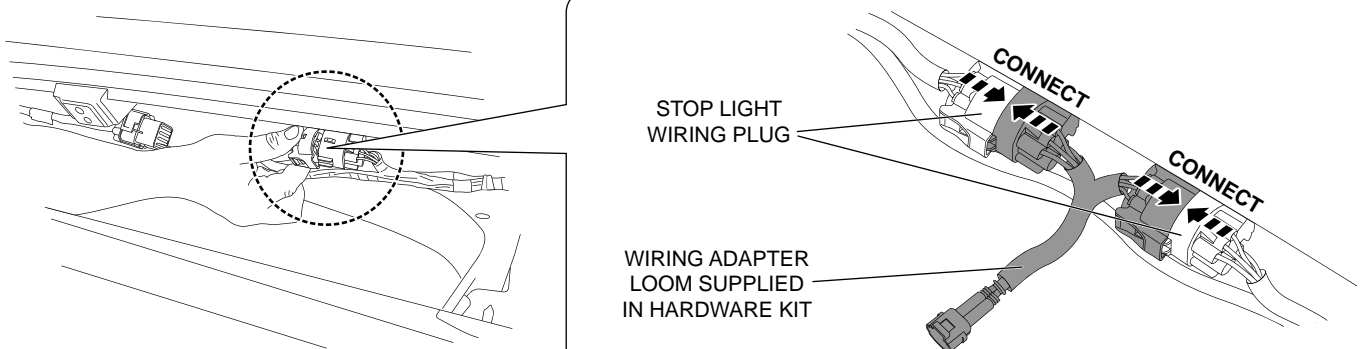


Diagram #12

12. Insert the wiring adapter loom supplied in hardware kit between the two connectors as shown. **See Dia #12.**

GMH VE UTE 2007 SPORTS BAR

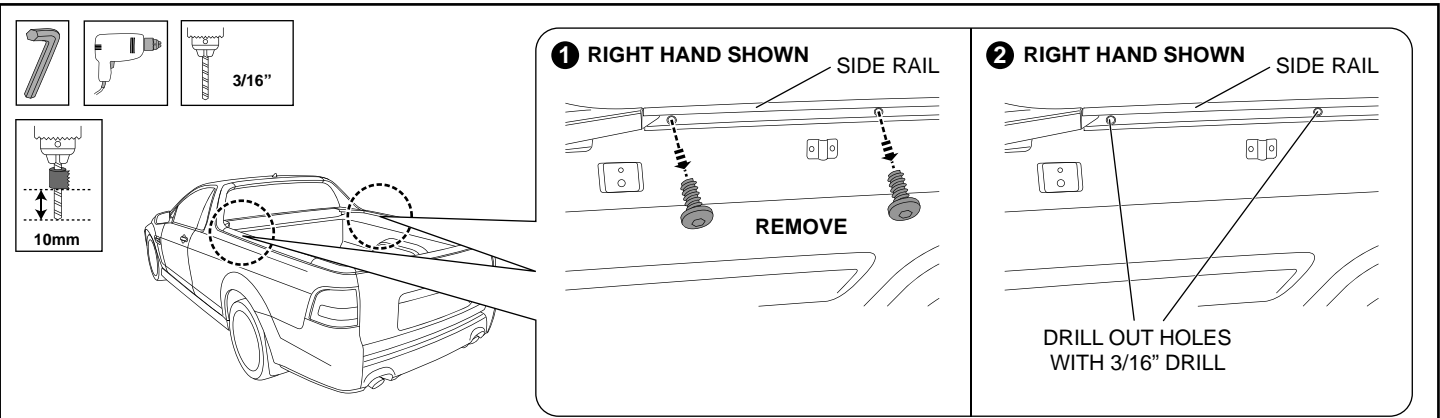


Diagram #13

13. Remove and discard the screws from the front two (2) holes on the side rail as shown. Repeat for the other side of the vehicle. Drill out all four (4) holes with a 3/16" drill. Clean away swarf from drill and drilled holes. **See Dia #13. NOTE: Be careful not to drill through the outside rail. Use 10mm drill stop as shown.**

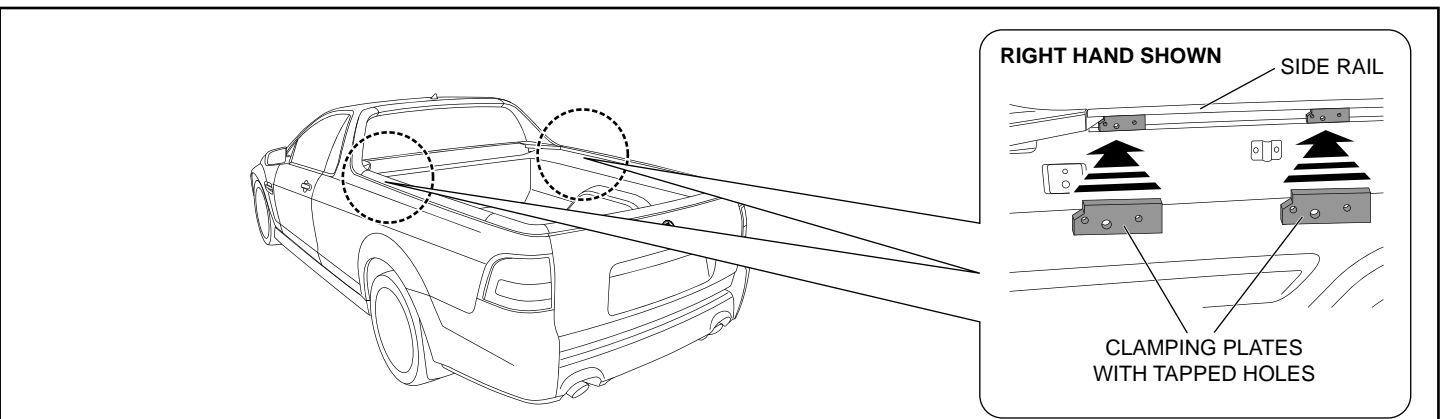


Diagram #14

14. Slide the clamping plates with tapped holes into the side rail and locate centrally over the top of the previously drilled holes. Repeat process for the other side of the vehicle. **See Dia #14.**

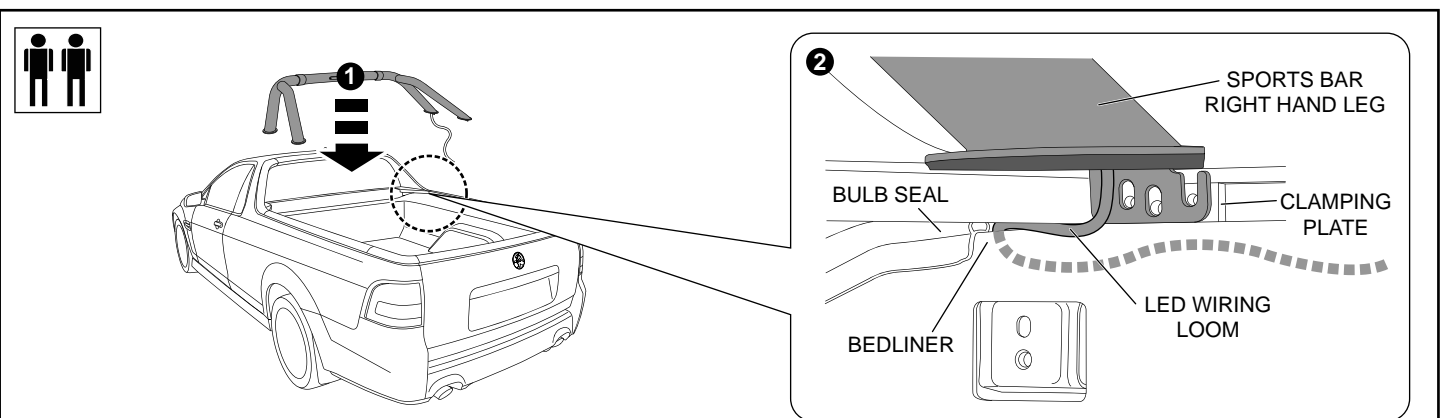


Diagram #15

15. Fit the Sports Bar to the vehicle as shown. Tuck the LED wiring loom up under the side rail and behind the bedliner as shown. **See Dia #15.**

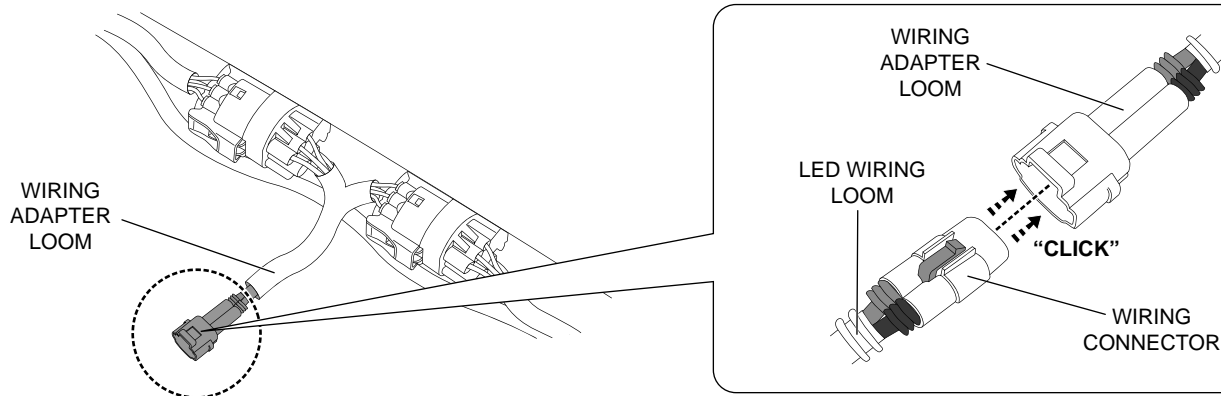
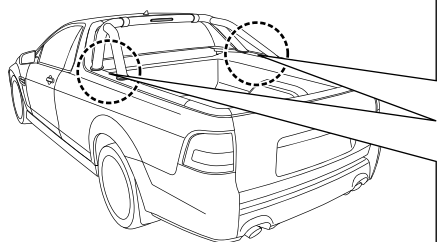
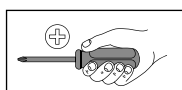
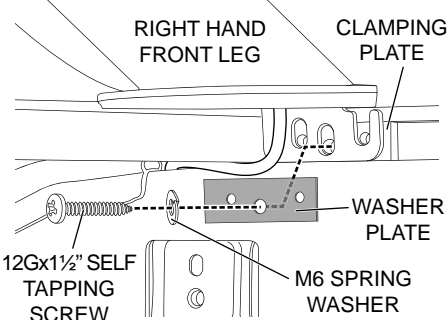


Diagram #16

16. Feed the LED wiring loom along the inside of the side panel and connect it to the wiring adapter loom as shown. **See Dia #16.**



1 RIGHT HAND SHOWN



2 RIGHT HAND SHOWN

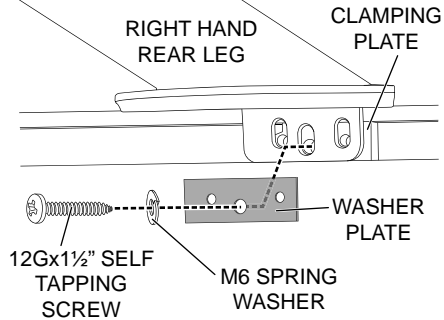
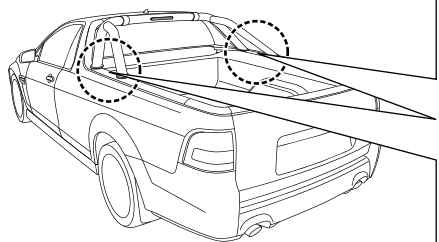
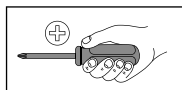
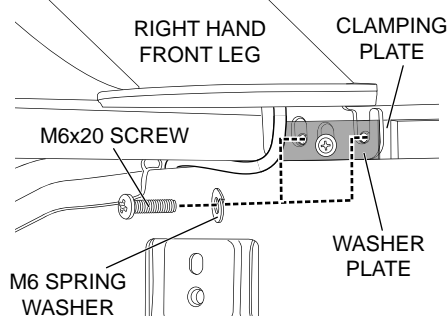


Diagram #17

17. Attach the Sports Bar front legs to the clamping plates and side rails using the 12Gx1½" self tapping screws, M6 spring washers and washer plates as shown. Do not tighten yet. Repeat process for the Sports Bar rear legs. **See Dia #17.**



1 RIGHT HAND SHOWN



2 RIGHT HAND SHOWN

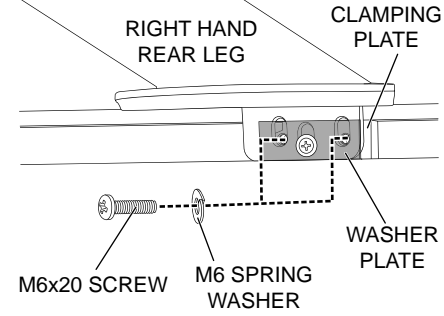


Diagram #18

18. Attach the Sports Bar front legs to the clamping plates using the M6x20mm screws and M6 spring washers as shown. Do not tighten yet. Repeat process for the Sports Bar rear legs. **See Dia #18.**

GMH VE UTE 2007 SPORTS BAR

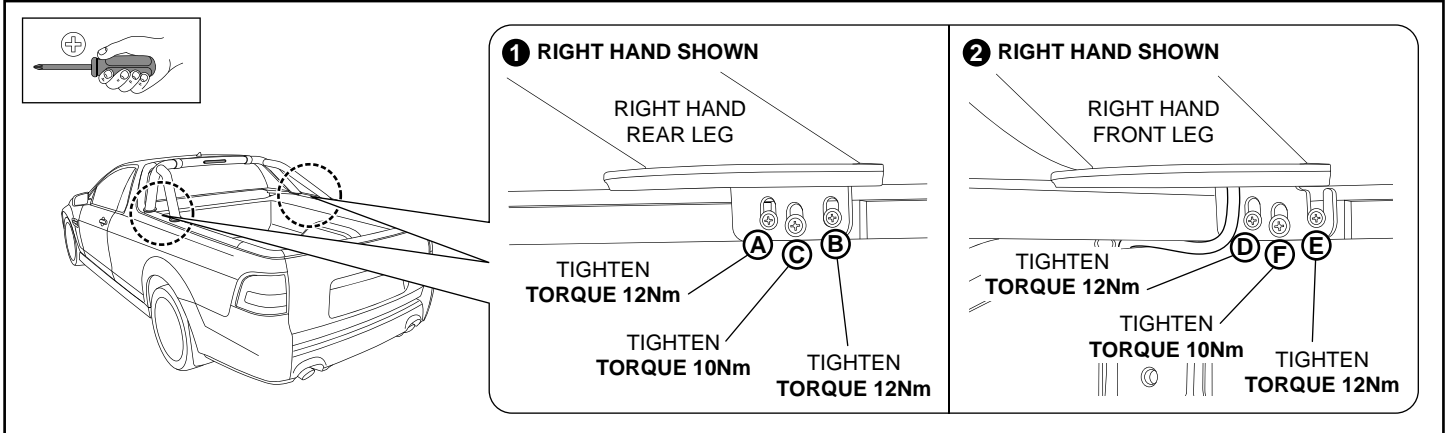


Diagram #19

19. Tighten all the screws on the Sports Bar right hand leg in the order A - B - C - D - E - F. Tighten A, B, D & E to torque 12Nm. Tighten C & F to torque 10Nm. Repeat process for the Sports Bar left hand leg. Visually check that all screws are home and all spring washers are compressed. **See Dia #19.**

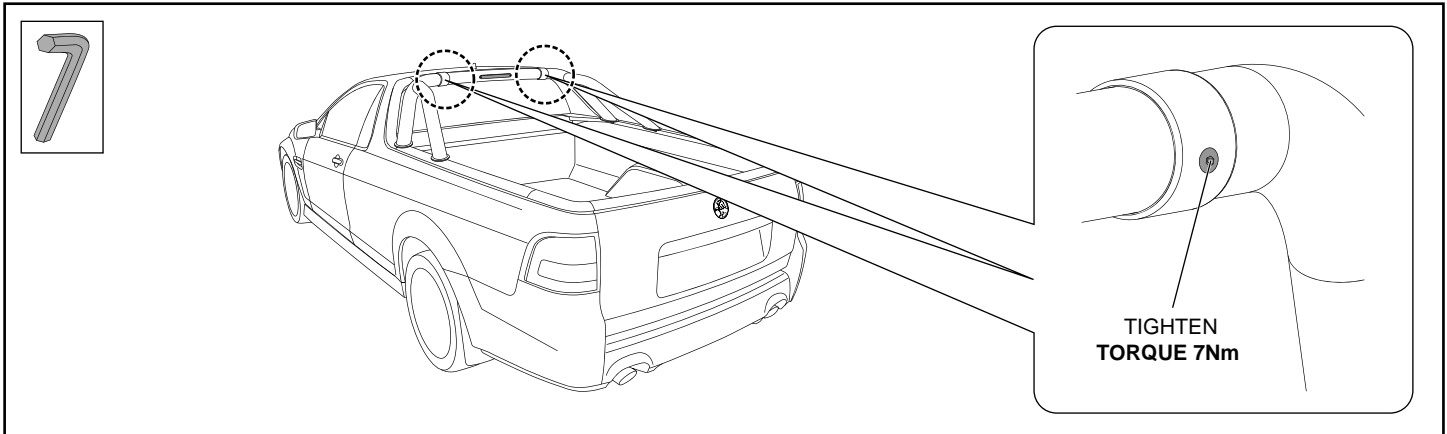


Diagram #20

20. Tighten the M8x30mm black screws in the Sports Bar Top Tube as shown. Tighten to torque 7Nm. **See Dia #20.**

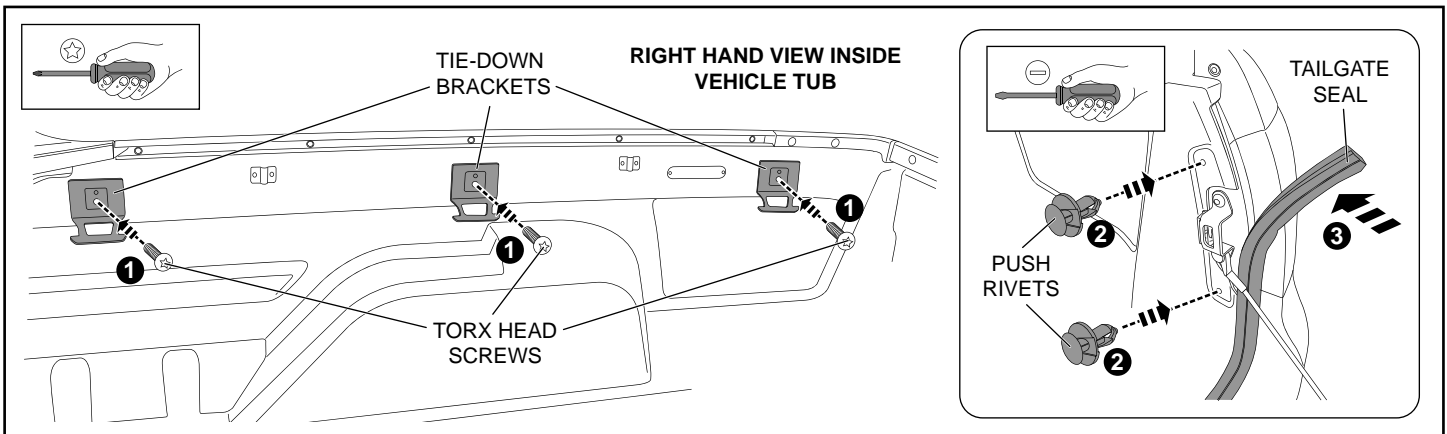


Diagram #21

21. To ensure it is functioning correctly, test the Sports Bar LED by depressing the vehicle's brake pedal. Re-attach the bedliner by lifting it back into position, re-installing the tie-down brackets, the push rivets and the tailgate seal as shown. **See Dia #21.**